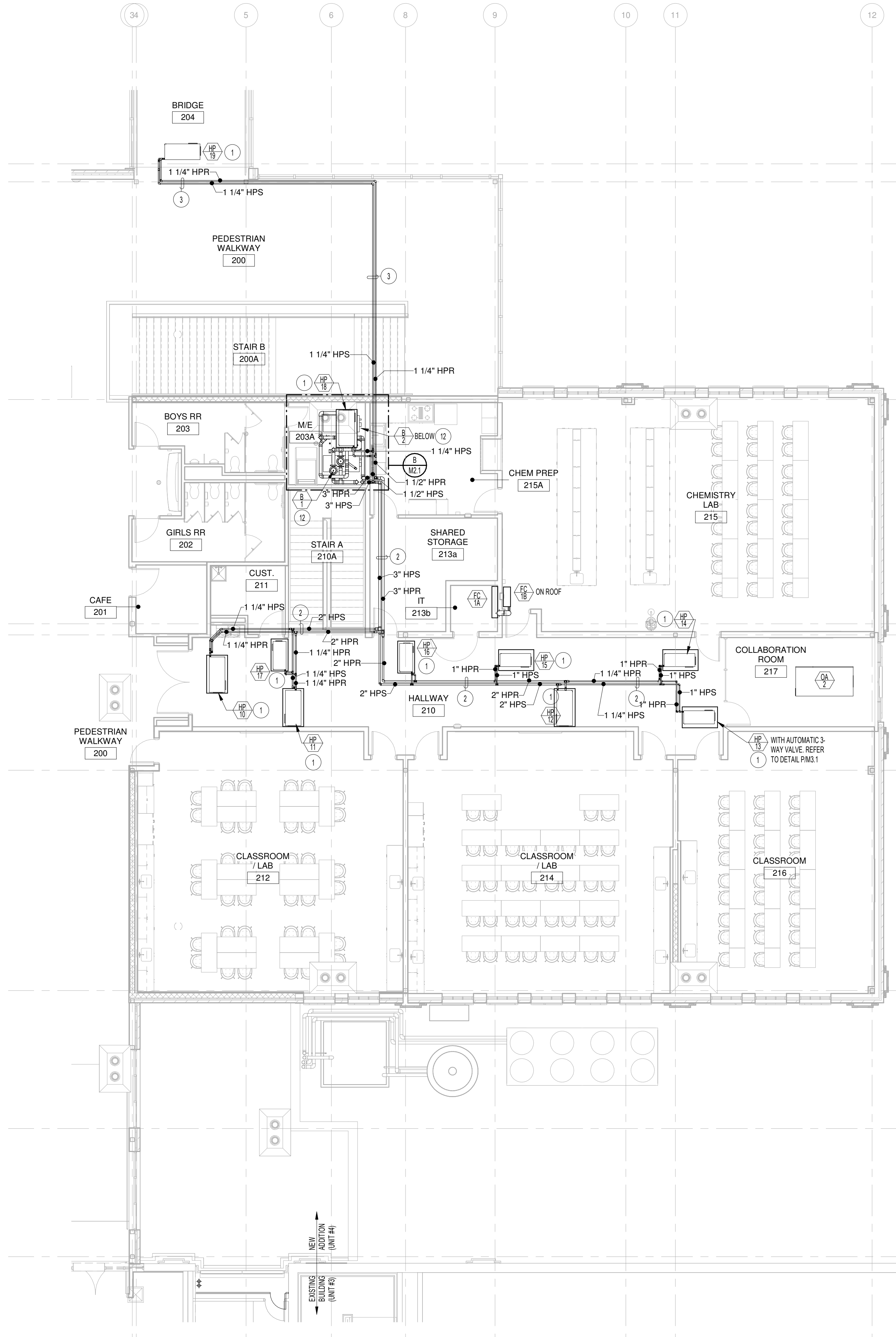
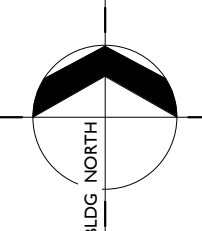
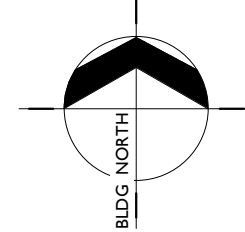


MAIN LEVEL HYDRONIC PIPING PLAN
SCALE: 1/8" = 1'-0"



UPPER LEVEL HYDRONIC PIPING PLAN
SCALE: 1/8" = 1'-0"



PLAN NOTES:

- 1 PROVIDE AND INSTALL WATER SOURCE HEAT PUMP AS SPECIFIED. PROVIDE 2" HIGH SHEET METAL DRAIN PAN BELOW UNIT. CONNECT HEAT PUMP SUPPLY AND RETURN PIPING TO UNIT WITH SHUT-OFF VALVES, AUTOMATIC CONTROL VALVE, AND FLEXIBLE HOSE KIT. REFER TO DETAIL PIM.1 FOR TYPICAL INSTALLATION AND PIPING CONNECTIONS.
- 2 RUN NEW HYDRONIC PIPING ABOVE CEILINGS AS SHOWN. COORDINATE ROUTING OF PIPING WITH OTHER PIPING, DUCTWORK, EQUIPMENT AND BUILDING STRUCTURE.
- 3 WHERE NO CEILINGS ARE PRESENT, RUN HYDRONIC PIPING THRU JOIST SPACES. COORDINATE ROUTING OF PIPING WITH OTHER PIPING, DUCTWORK, EQUIPMENT AND BUILDING STRUCTURE.
- 4 CONNECT NEW 4" CHILLED WATER SUPPLY AND RETURN PIPING TO EXISTING 4" CORRESPONDING PIPING ABOVE STORAGE ROOM CEILING. REMOVE EXISTING VERTICAL PIPING DOWN THRU STORAGE ROOM. FIELD VERIFY EXACT SIZE AND LOCATION OF EXISTING CHILLED WATER PIPING SERVING EXISTING UNIT #3 (GYMNASIUM BUILDING).
- 5 EXISTING STEAM AND CONDENSATE RETURN PIPING ABOVE STORAGE ROOM CEILING TO REMAIN. PROTECT EXISTING PIPING DURING CONSTRUCTION. COORDINATE NEW PIPING AND DUCTWORK WITH EXISTING STEAM LINES.
- 6 EXISTING CHILLED WATER PIPING BELOW GRADE TO BE REMOVED. REFER TO EXISTING COURTYARD MECHANICAL DEMOLITION PLAN ON SHEET M.1.
- 7 DISCONNECT AND REMOVE EXISTING AIR COOLED CHILLER AND ALL ASSOCIATED PIPING. REFER TO EXISTING COURTYARD MECHANICAL DEMOLITION PLAN ON SHEET M.1.
- 8 NEW CHILLER PROVIDED AND INSTALLED BY MECHANICAL CONTRACTOR. REFER TO BOILER / COOLING TOWER / CHILLER PIPING DIAGRAM ON SHEET M.2 FOR TYPICAL PIPING CONNECTIONS. VERIFY ACTUAL PIPE CONNECTION POINTS AND SIZES WITH EQUIPMENT PROVIDED. FURNISH ALL FITTINGS REQUIRED FOR CONNECTION.
- 9 NEW COOLING TOWER PROVIDED AND INSTALLED BY MECHANICAL CONTRACTOR. REFER TO BOILER / COOLING TOWER / CHILLER PIPING DIAGRAM ON SHEET M.2 FOR TYPICAL PIPING CONNECTIONS. VERIFY ACTUAL PIPE CONNECTION POINTS AND SIZES WITH EQUIPMENT PROVIDED. FURNISH ALL FITTINGS REQUIRED FOR CONNECTION.
- 10 COOLING TOWER CIRCULATING PUMPS LOCATED IN TOWER SUMP. REFER TO DETAIL NWS.1 AND OWS.1 FOR PUMP LOCATIONS AND MOUNTING. REFER TO BOILER / COOLING TOWER / CHILLER PIPING DIAGRAM ON SHEET M.2 FOR TYPICAL PIPING CONNECTIONS. VERIFY ACTUAL PIPE CONNECTION POINTS AND SIZES WITH EQUIPMENT PROVIDED. FURNISH ALL FITTINGS REQUIRED FOR CONNECTION.
- 11 MECHANICAL CONTRACTOR TO PROVIDE AND INSTALL HEAT EXCHANGER AND SAND SEPARATOR IN MAIN LEVEL MECHANICAL ROOM ALONG WITH ALL ASSOCIATED PIPING AND CONTROLS. REFER TO LARGE SCALE PLANS ON SHEET M.1 AND TO BOILER / COOLING TOWER / CHILLER PIPING DIAGRAM ON SHEET M.2.
- 12 MECHANICAL CONTRACTOR TO PROVIDE AND INSTALL BOILERS, CIRCULATING GRUPS, LOW LOSS HEADER, EXPANSION TANK, ETC. IN UPPER LEVEL MECHANICAL ROOM ALONG WITH ALL ASSOCIATED PIPING AND CONTROLS. REFER TO LARGE SCALE PLANS ON SHEET M.1 AND TO BOILER / COOLING TOWER / CHILLER PIPING DIAGRAM ON SHEET M.2.

HUMMEL
a: 2785 North Bogus Basin Road
Boise, Idaho 83702
p: (208)343.7523
f: (208)343.0940

Project:
**POCATELLO HIGH SCHOOL -
ADDITION & RENO.**

325 N ARTHUR AVE
POCATELLO, ID 83204

Sheet:
**FIRST AND SECOND FLOOR
PLANS - HYDRONIC PIPING**

BID SET - 01/24/2020

Revisions: Δ

Engineered Systems Associates
1355 EAST CENTER
POCATELLO, IDAHO 83201
PHONE: (208) 233-0501
FAX: (208) 233-0529
EMAIL: esa@engsystems.com
ESA JOB NUMBER: 18075

Project No: 1355 EAST CENTER
Drawn By: M Jensen
Checked By: D Subwicks
Date: 01/24/2020

Sheet No: **M1.3**